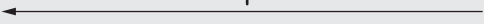


WWW.SOSTRENEGRENE.COM

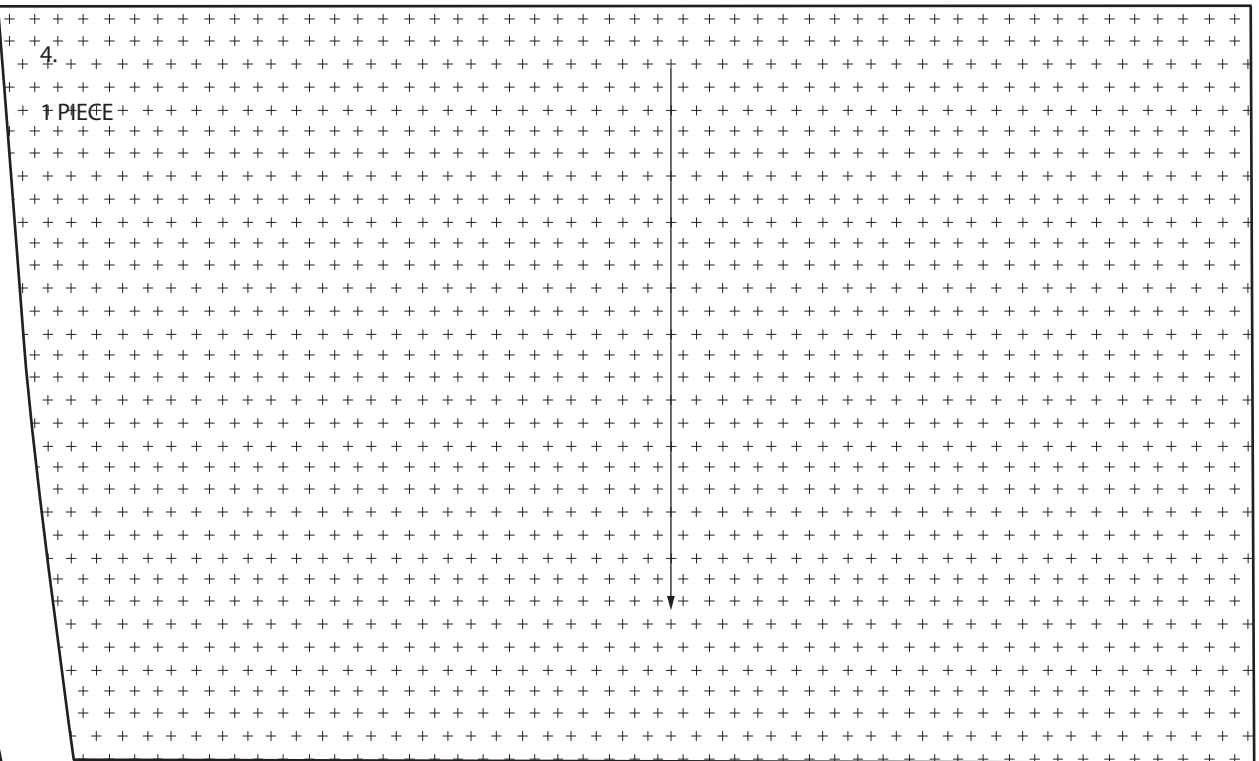
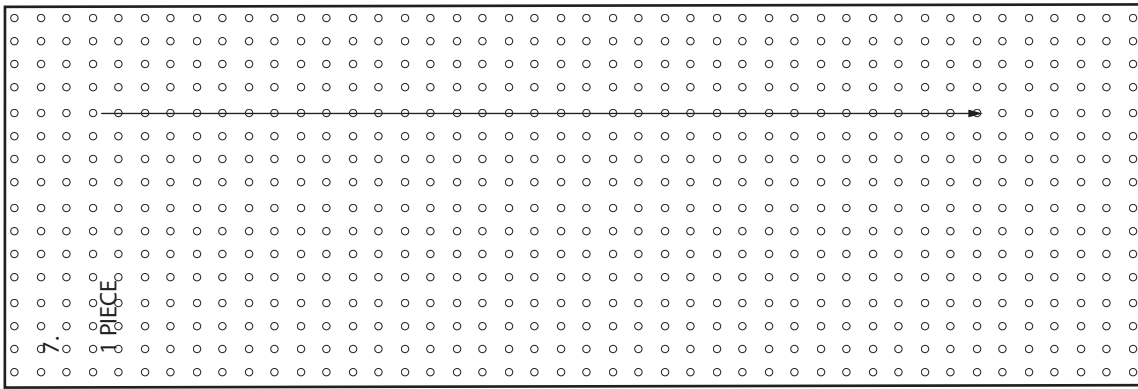
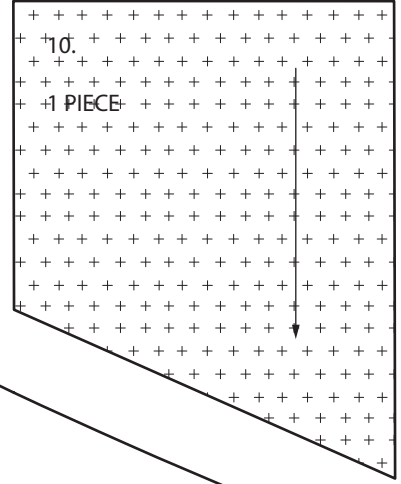
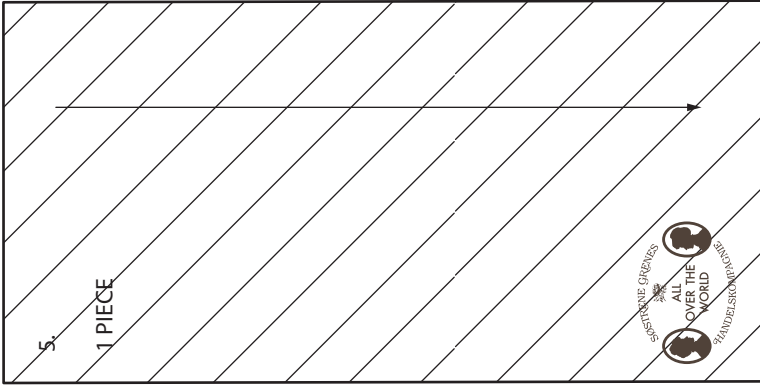
HANGING STRAP  
1 PIECE

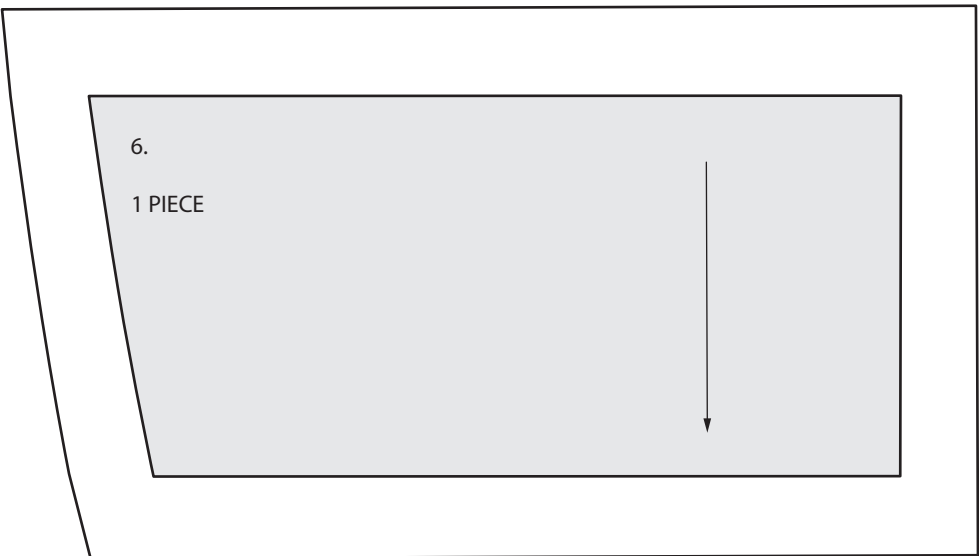
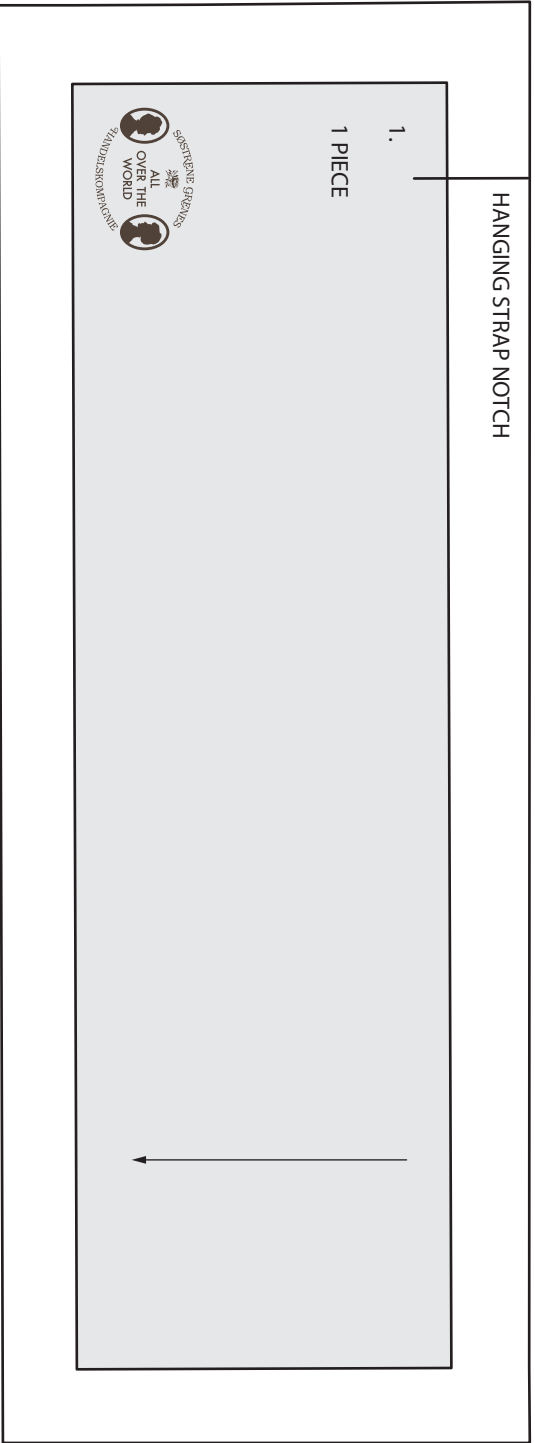
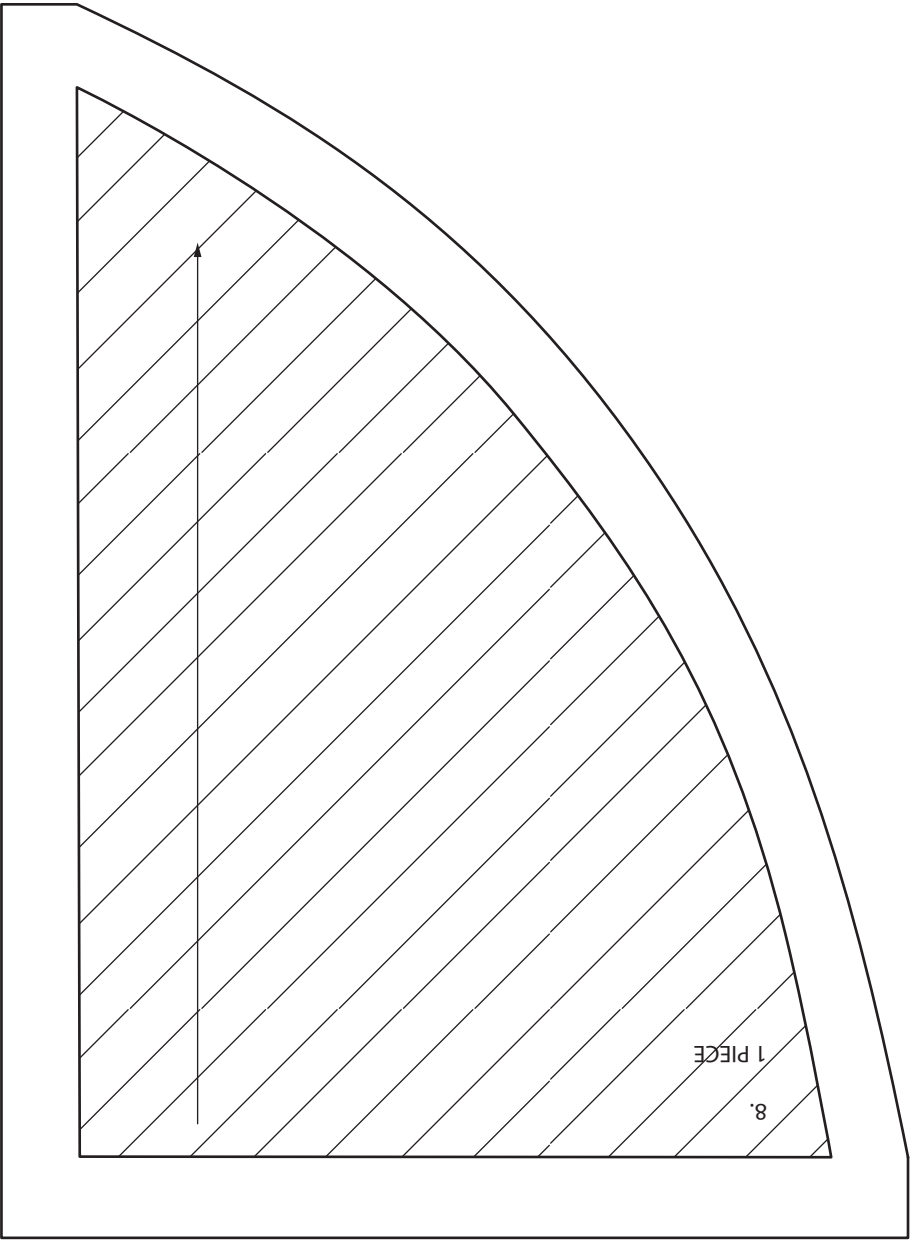
FOLD

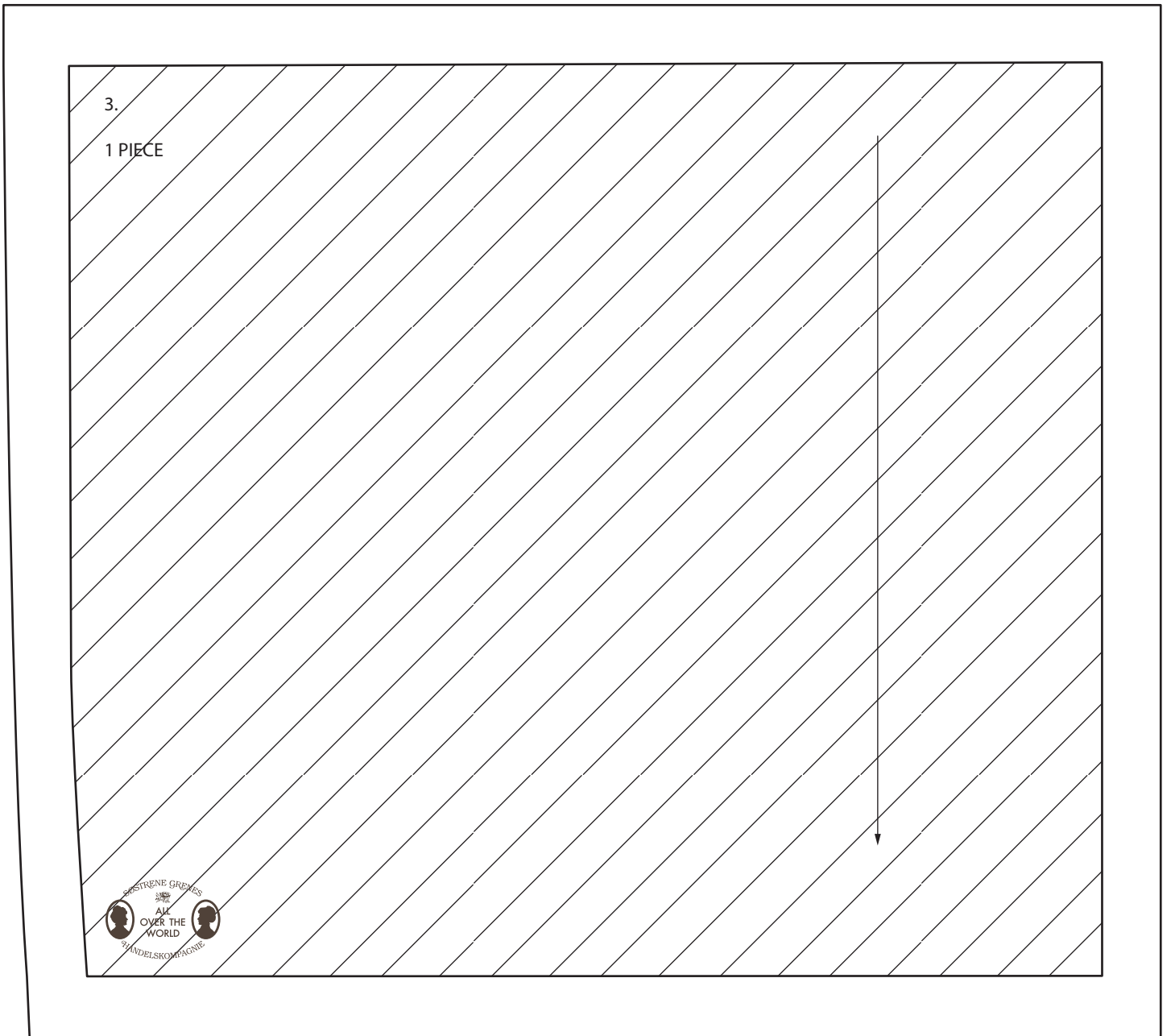
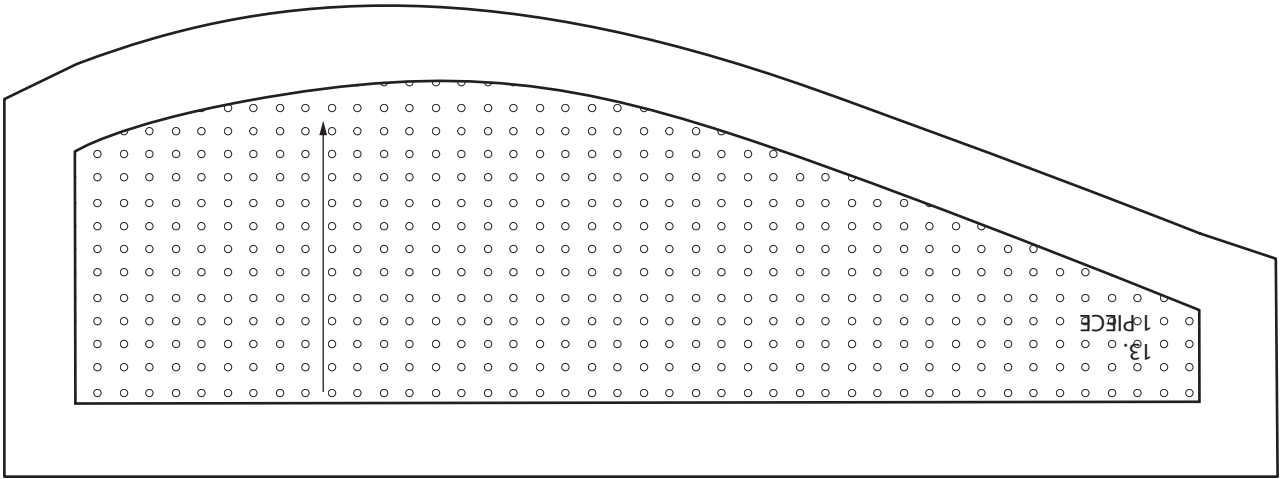


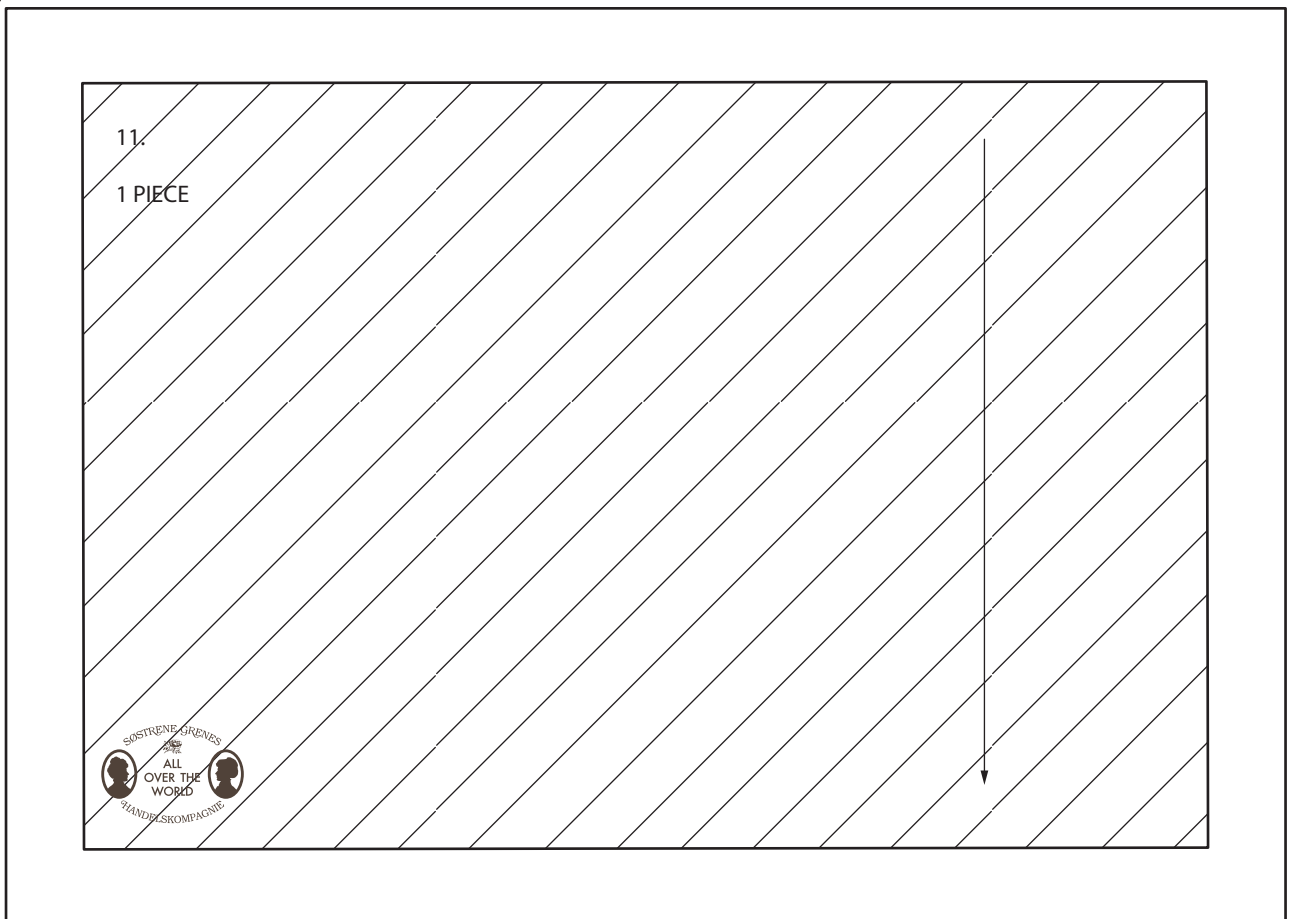
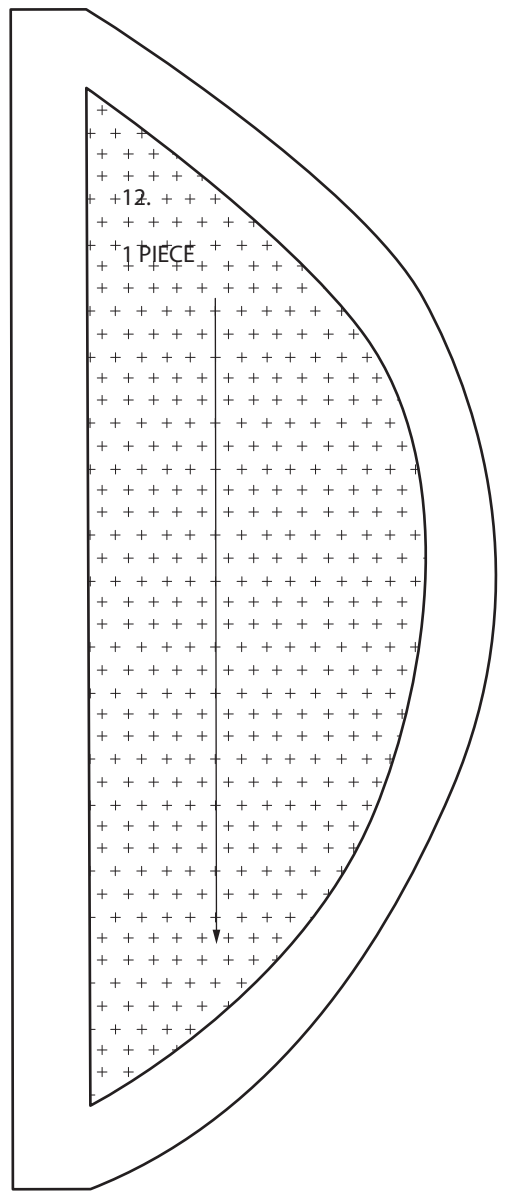
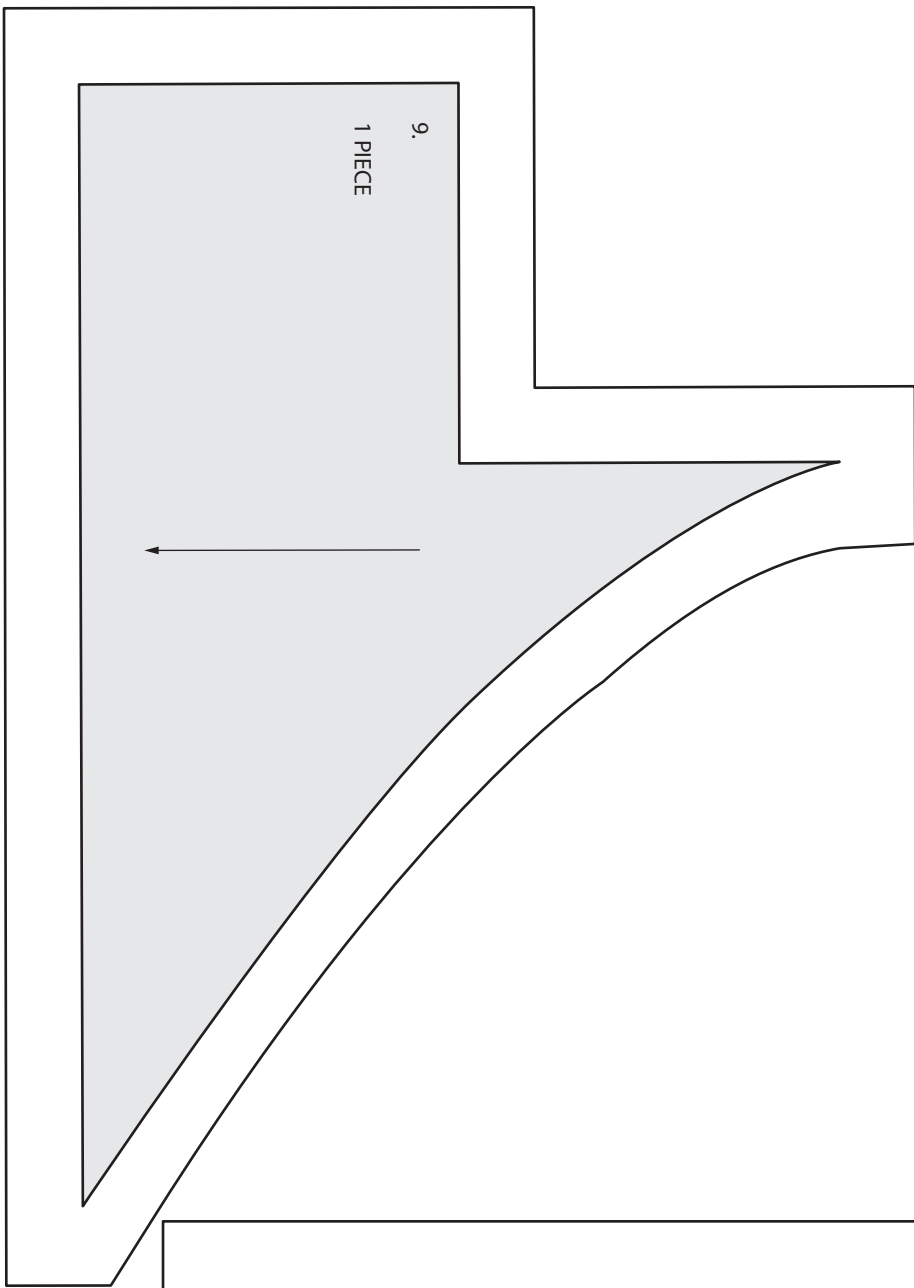
2.  
1 PIECE





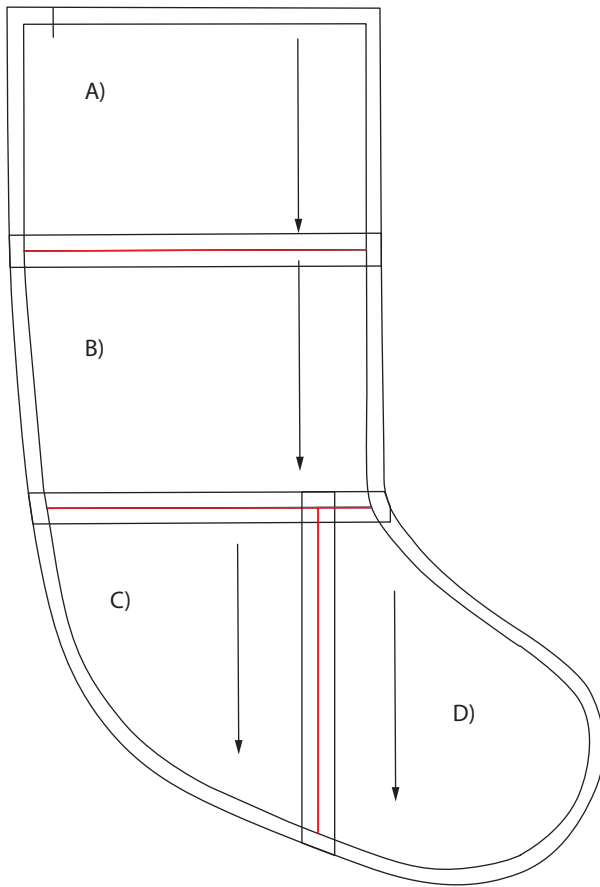






A)

FOR PLAIN BACK SIDE AND INSIDE LINING PIECES:  
CUT OUT FOLLOWING 4 PATTERN PIECES AND  
ASSEMBLE W. TAPE  
CUT 1 MIRRORING PATCHWORK SIDE AND 1 PAIR



ASSEMBLING LINE



ASSEMBLING LINE

B)

ASSEMBLING LINE





ASSEMBLING LINE

C)

ASSEMBLING LINE



ASSEMBLING LINE

D)

ASSEMBLING LINE

